



LOOK
BOOK

TEAK, CRAFTS & INNOVATION
2019 COLLECTION

TEAK, CRAFTS & INNOVATION

 GLOSTER



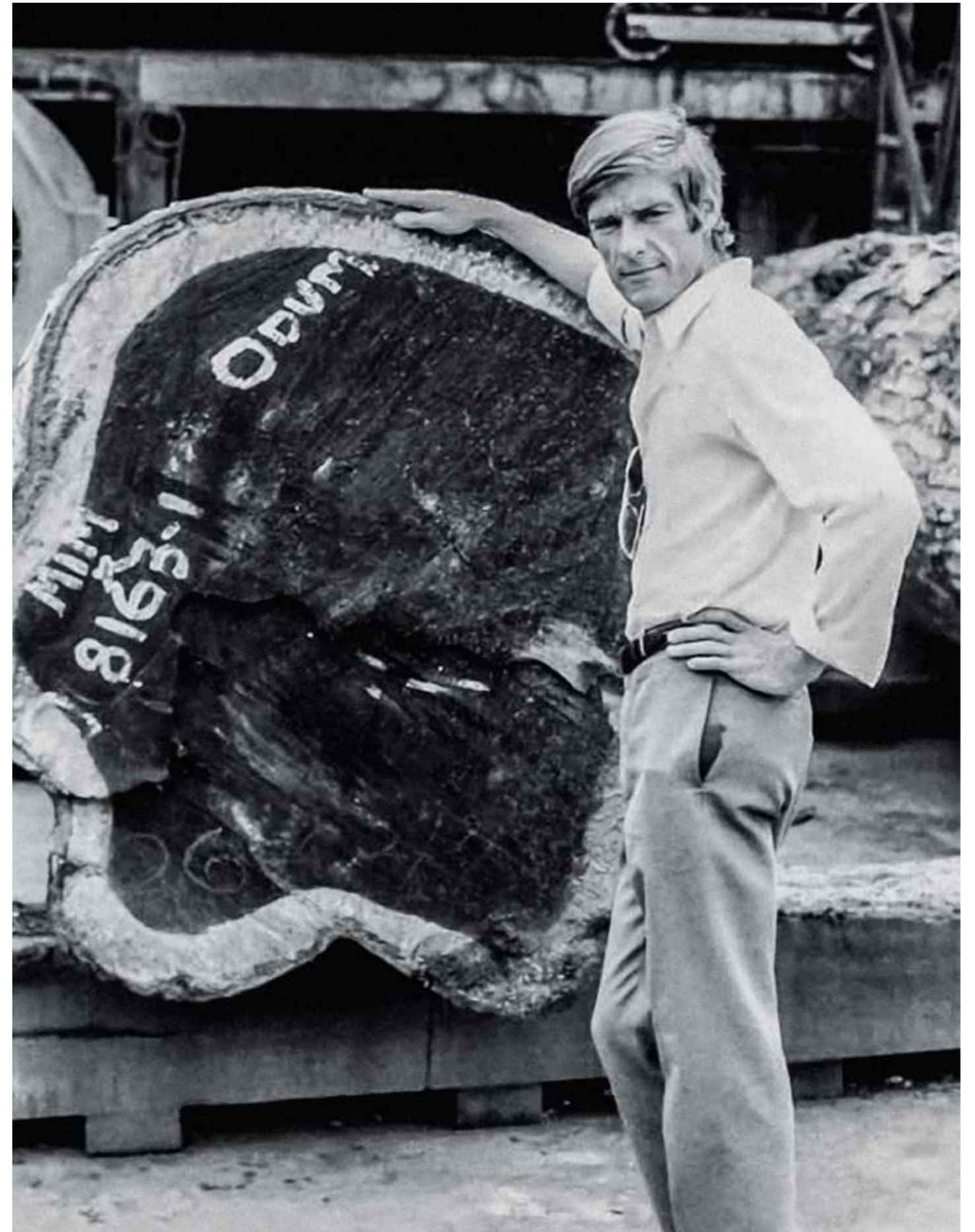
ARCHITECTURE

WILL ALWAYS BE A PART OF THE BACKDROP

Working with furniture, the overall expression will always be the result of the architecture and surroundings they are interacting with. Therefore, setting the right scene is essential for the correct perception of the Gloster collection.

OUR HERITAGE

Gloster's roots can be traced all the way back to West Africa in 1960, where a band of passionate entrepreneurs and furniture makers took the first steps on a long journey. By the early 1970's, increased demand and access to plantation grown teak led us to move our factory to Indonesia. Today, the same passion, conviction and pride that launched the Gloster brand, continues to fuel our business. We may live in a different world than the one occupied by our founders, but one thing remains the same - we are furniture makers whose sole focus is to design and build the world's finest outdoor furniture.





TEAK & PLANTATIONS

The benchmark hardwood for fine outdoor furniture for more than 700 years. With a beautiful, soft natural finish, every piece of Gloster teak originates from carefully managed plantations and is thoroughly inspected to ensure that quality endures. A close-grained hardwood with a high natural oil content, teak is exceptionally hard wearing, highly resistant to rotting and almost impervious to the effects of sun, rain, frost or snow - the first and only choice of timber for outdoor furniture.

Gloster's production of teak is characterised by our approach. We understand our resources and we know our wood. We only harvest what we have planted ourselves, and every tree that is felled was placed in the soil by third to fourth generation teak graders - workers whom we have known for a lifetime. A Gloster teak tree has a lifecycle of at least 50 years - and our wood can always be traced back to its origin. We believe that our customers must be able to trust us, so we treat the world, its resources and its people with respect.

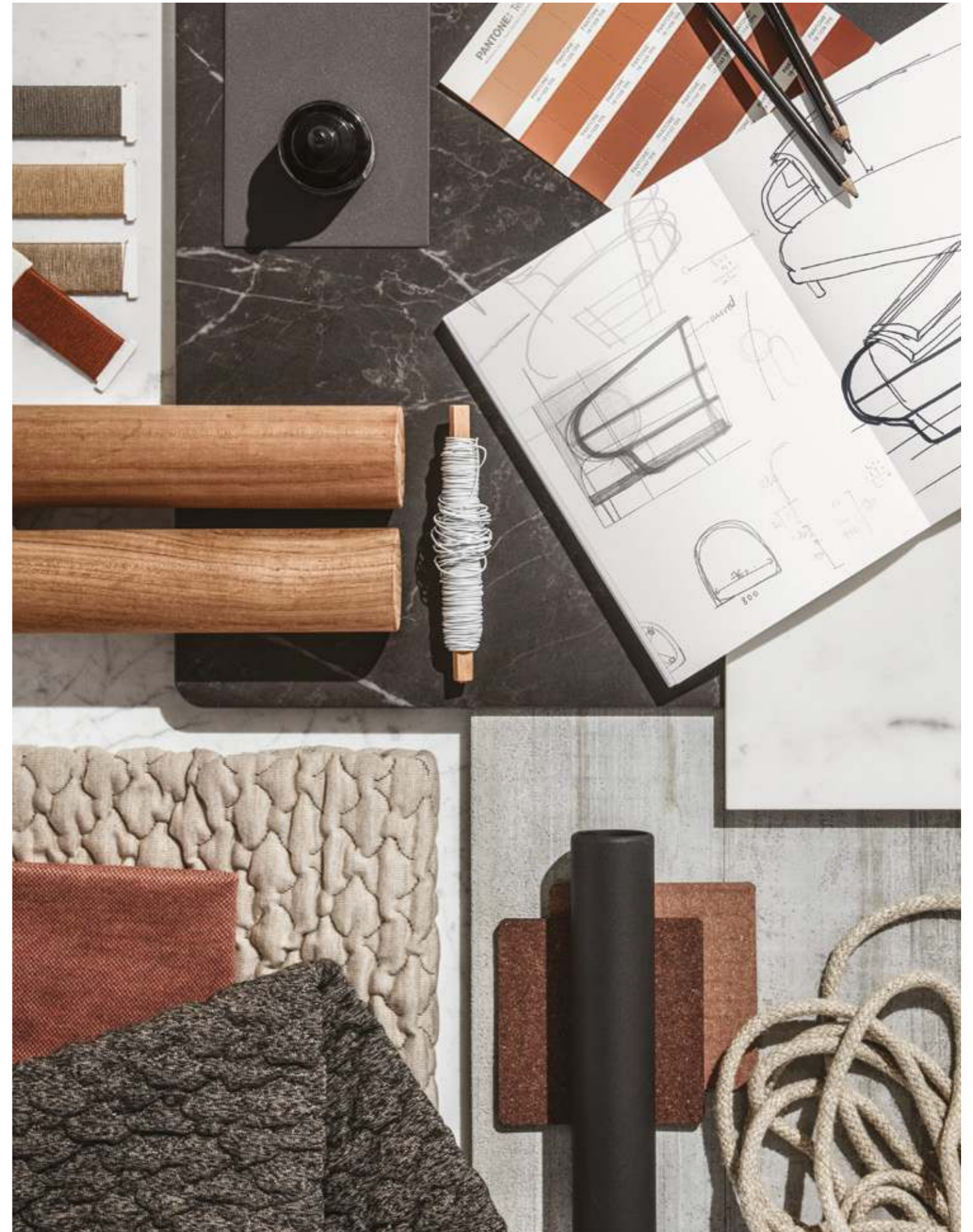
A hand is shown holding a thick, light-colored wooden chair leg. The leg is part of a larger wooden structure, possibly a chair or stool, with other legs visible in the upper part of the frame. The background is a plain, light grey or off-white color. The lighting is soft and even, highlighting the natural grain and texture of the wood. The hand is positioned at the bottom right, gripping the leg firmly.

BETTER DESIGN THROUGH CRAFTSMANSHIP & INNOVATION

Skills & loyalty, tradition & progress. Gloster and fine craftsmanship go hand in hand. Our furniture is not the result of random mass production - human hands have created every rounded corner and every joint, and the quality of the furniture is the result of our employees' knowledge and skills. Our customers must be able to feel the link to themselves when they buy our furniture. There must be a common history present, and a narrative of the life that we love to live. The furniture must speak a language that we understand - a language that awakens our curiosity. But we do not wish to stagnate in the past. We look forward and outward, so the past and future merge into a bold present to which we can all relate.

OUR DESIGNERS

Of course, great manufacturing is wasted without great design. Gloster currently works with several world-renown designers to create timeless outdoor furniture. Once a concept is approved, designers work closely with the development team at our factory to further refine their designs. And even in this digital age, we insist our designers travel to and spend time at our factory so they get to know our people, our raw materials and our philosophy.





AMBIANCE

Light extends the scope of outdoor living and is an essential part of the Gloster collection. Our portable lights create the right ambiance and set the mood for an overall warm and cosy experience in almost any outdoor space.



TRUE CRAFT HAS MANY FACES

Just like the oil in our teak, a passion for excellence runs through Gloster. From the timber technician through to the CEO, each is a craftsman in their own way and each takes pride in their contribution to producing the world's finest outdoor furniture.

FIRST ROW - LEFT TO RIGHT

LARS ERIKSEN
Gloster Europe
Managing Director

ERNEST
Gloster Indonesia
Timber Technician

HENRIK HANSEN
Gloster Indonesia
Product Development & Technical Manager

SECOND ROW - LEFT TO RIGHT

BUDY SANYOTO
Gloster Indonesia
Head of Timber Production

TIM COOK
Gloster Indonesia
Product Development Manager

MATT ROBINSON
Gloster Europe
Marketing Manager

THIRD ROW - LEFT TO RIGHT

NGATIONO
Gloster Indonesia
Head of Metal

WINARTI
Gloster Indonesia
Sewing Technician

KENT GRAFF
Gloster Indonesia
Managing Director

FOURTH ROW - LEFT TO RIGHT

MOLYONO
Gloster Indonesia
Head of Sawmill

SVEND LOEVBJERG
Gloster Group
Chief Executive Officer

PAUL WALLEVIK*
Founder of Gloster (1933-2018)

*PAUL WALLEVIK

Paul first started producing furniture 57 years ago, based on a foundation of design, quality and attention to detail. Today we honour his legacy by continuing the tradition he established - one of high standards and true craftsmanship.

2019

NEW COLLECTIONS

DUNE

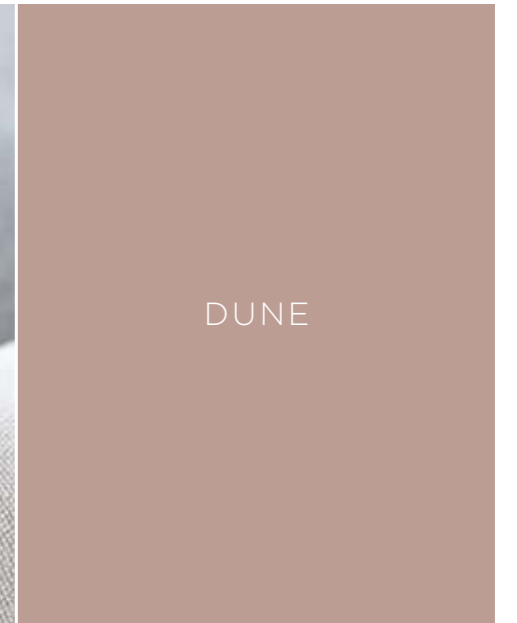
Like the shifting sands of the desert, the Dune collection combines soft lines and repeating patterns in an outdoor seating concept and a collection of four new knitted fabrics designed by Sebastian Herkner.

KAY

With a dramatically curved back, Kay by Henrik Pedersen makes no secret of the defining factors in the design. The primary objective of this concept was to combine weatherproof and durable materials with a timeless teak frame to create a seating & dining collection that is both comfortable and welcoming.

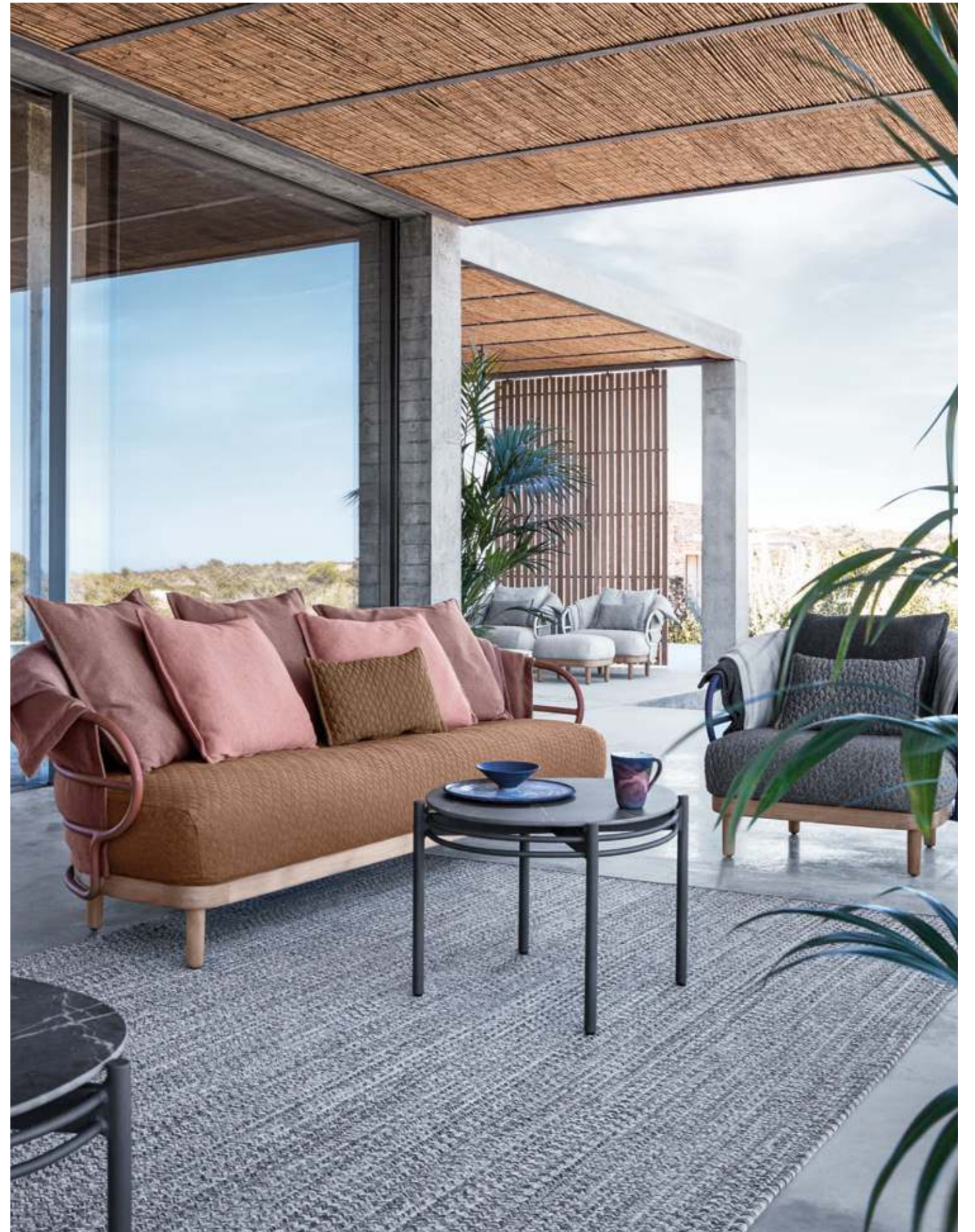
MAYA

Designed by Mark Gabbertas, Maya takes the principle of the iconic Cloud frame and refines it to reflect and enhance the sophistication of the new Gloster design philosophy, with particular attention given to the materials and technologies at the forefront of outdoor furniture design.



DUNE

A bohemian influence defines the style, with softness and spontaneity added via specially developed fabrics made with 3D knitting technology. Supreme comfort is achieved using upholstered cushions, quilted blankets and soft pillows placed within and on top of an aluminium frame with a teak base.







DUNE



A triumph of combined materials, Dune effortlessly integrates Gloster's signature teak with powder coated aluminium frames, durable ceramic table tops and luxurious knitted fabrics.



DUNE

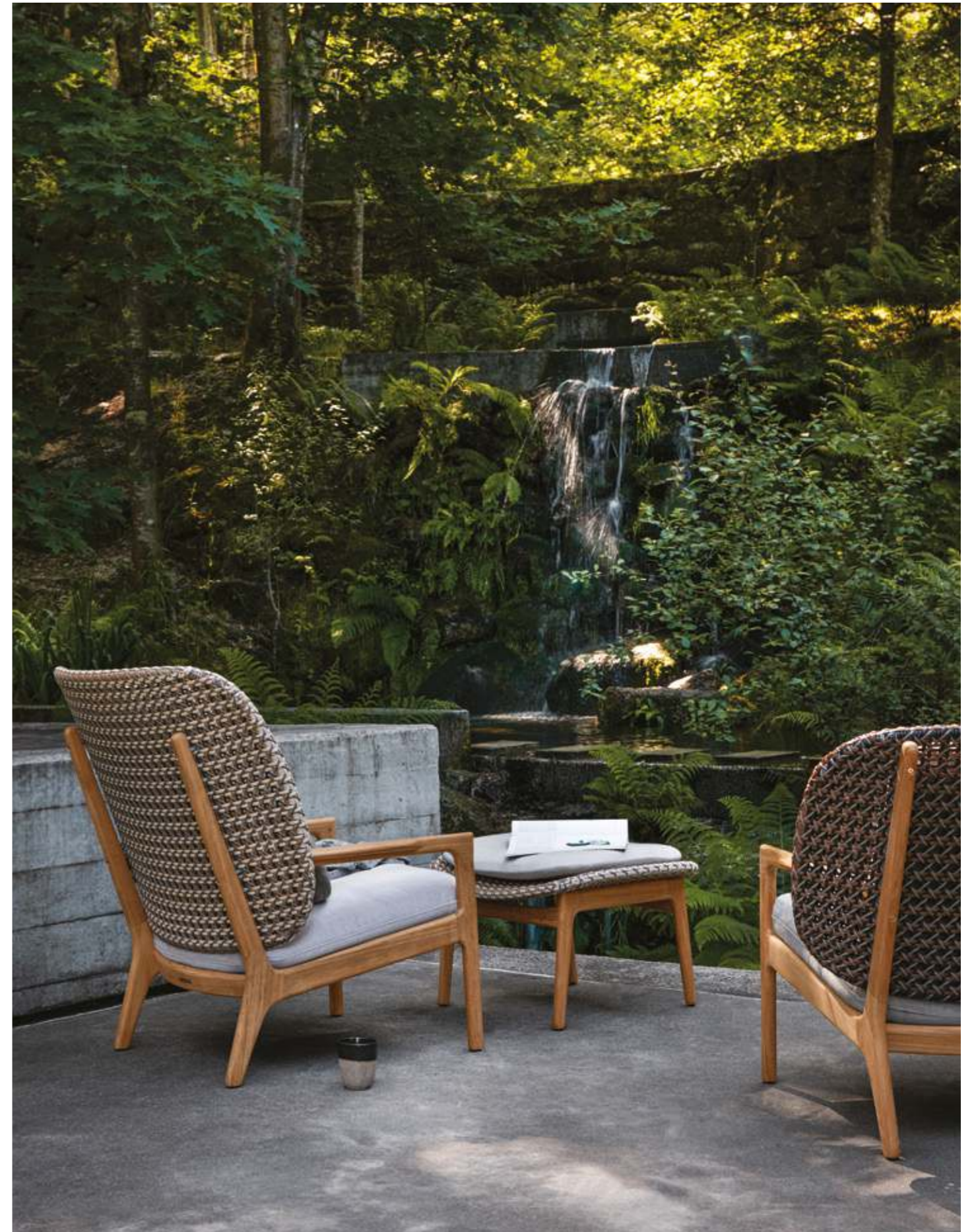
Dune is all about the dialogue. The initial idea for the collection was the scenario of having a good time with friends on the terrace - enjoying a cocktail and nice conversation in amazing comfort.





KAY

The backrest is unquestionably the defining statement of the Kay range. Deliberately oversized and beautifully curved for comfort, Kay embraces you as you sit offering comfort and shelter. Available in either Brindle, Harvest or Copper colour 'French Cane' style all-weather wicker combined with a delicate teak frame, Kays lines combine timeless style with practical comfort.







KAY

The Kay collection is comprised of a two seater sofa, an armchair and an ottoman. High and low variations of the back panel are available as options and can be used to create a fully consistent level or a variation in back heights depending on how you wish to style your space.



AMBIENT RAY

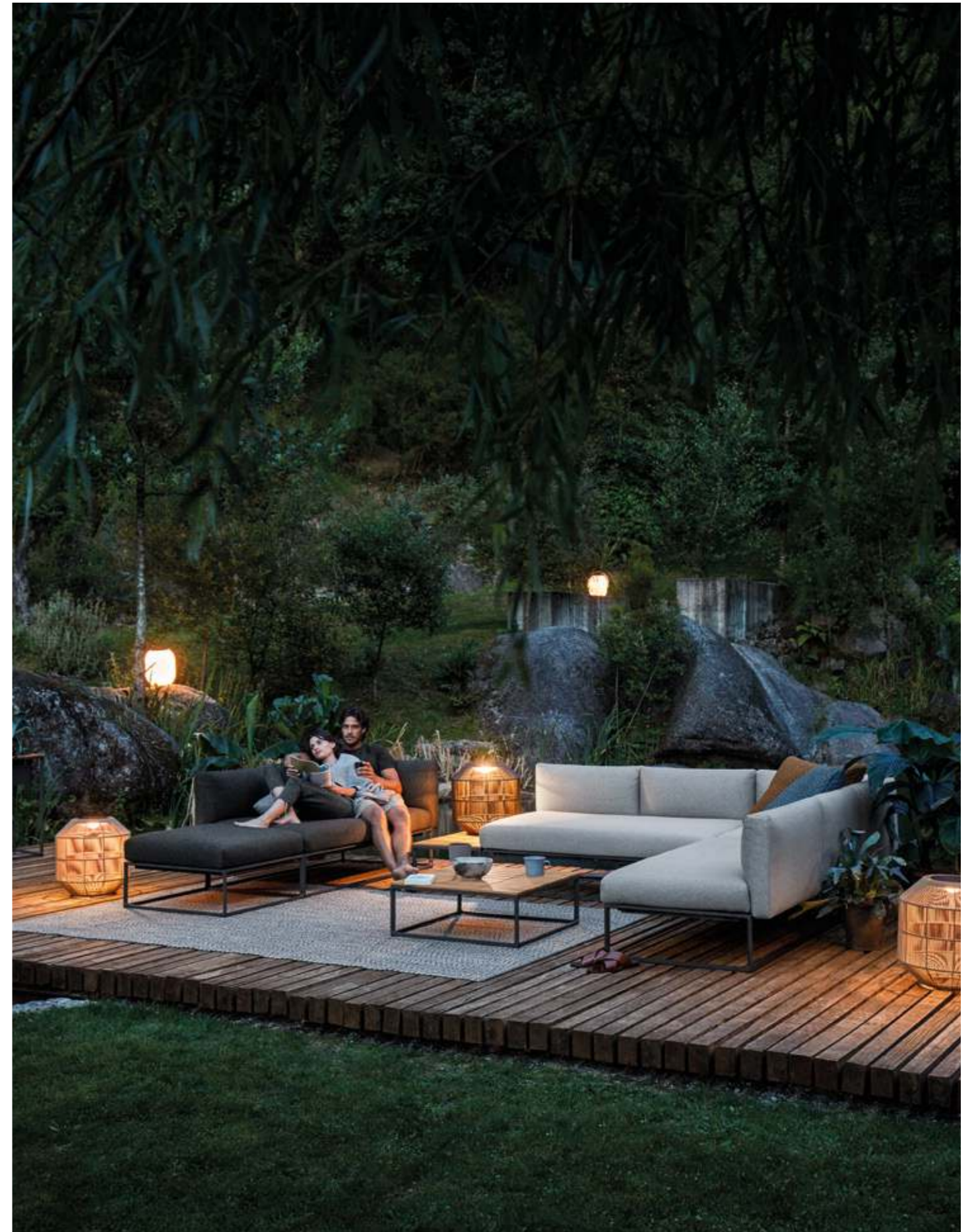
Like the beams of sunlight breaking through gathering clouds, the new Ambient Ray lantern both illuminates and inspires. Expertly crafted from fine sections of rounded teak and topped with a natural leather handle, this striking, yet practical outdoor light is the perfect addition to any outdoor space.





MAYA

When the Cloud range was launched in 2010, it incorporated new thinking and technology in the design of the upholstered elements and made these as comfortable as their interior cousins. Cloud not only invented the 'outdoor lounge' category, it went on to define it. So how do you improve this? It is often easier for a designer to start again rather than take an existing design and make it better. This was the challenge; the gentle, but meaningful evolution of an existing idea. To distil and keep the spirit of the original, but refresh the aesthetic and expand its possibilities.







MAYA



The Maya frame features an ultra-slender powder coated aluminium profile connected to cast aluminium legs. Side and back cushions are subtly revised in profile and detail and additions to the range include console tables and planters that allow for a series of living landscapes to be created outdoors.



BLOW

Bring sophisticated glazes in subtle hues to your life outdoors. The soft lines and natural tones of these beautifully rounded ceramic bases combine perfectly with solid, buffed teak table tops. Eye-catching and inspiring, these accent pieces beautifully reflect light across their soft, round surfaces and compliment any item in the Gloster range while adding character to any outdoor space.



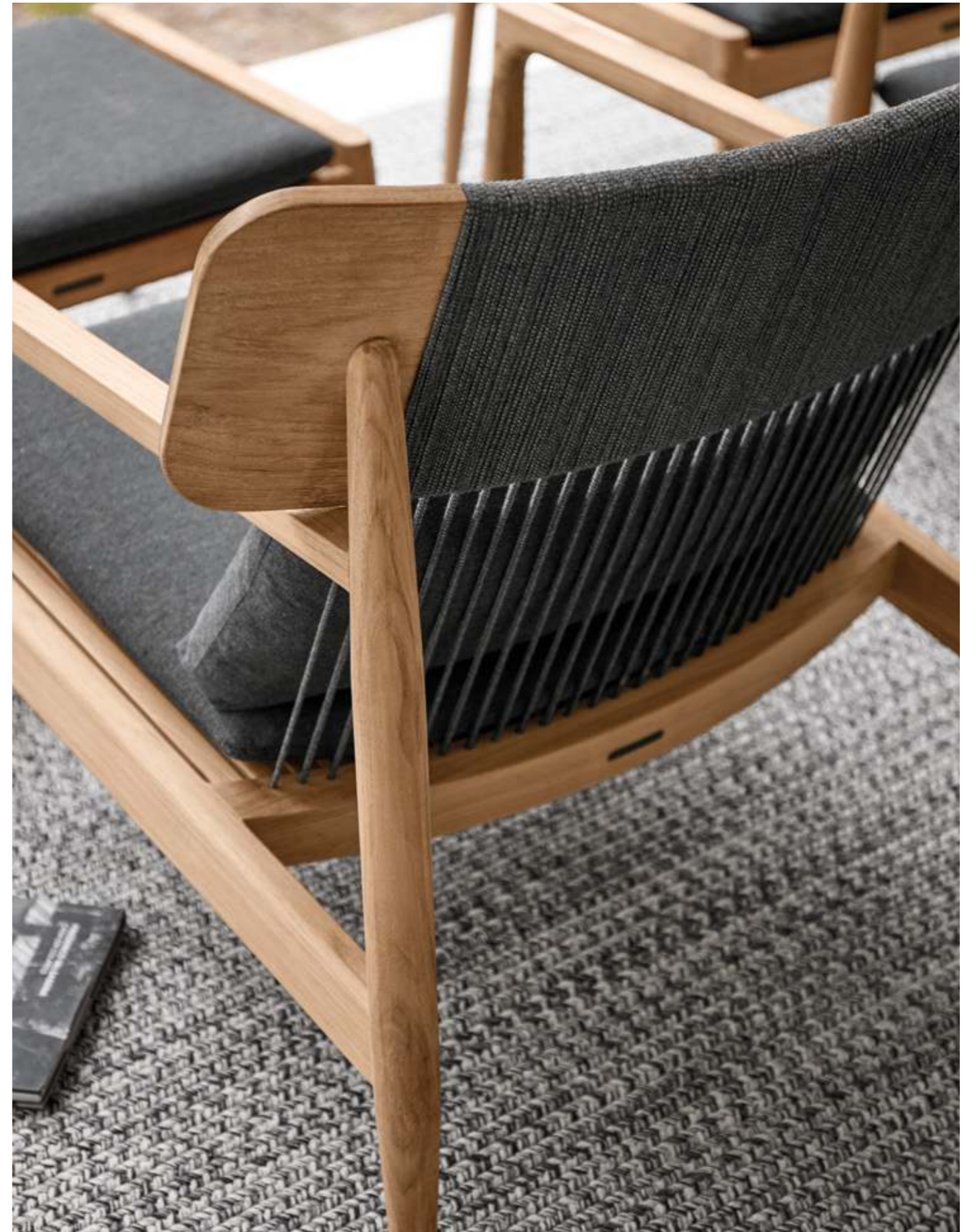
GEM

Like remnants of an abandoned temple or fantastically oversized jewellery, the sharp octagonal lines of Gem are hard to miss. Conceived by Danish Designer Henrik Pedersen, Gem tables are the epitome of what Gloster is known for - that little extra. While at a glance these tables are simple, take a moment to consider... A total of 18 panels are carefully cut from ceramic sheets, each perfectly bevelled to flawlessly tessellate with its hand-crafted neighbour. Seamlessly bonded, these panels come together to create a shape beautiful in its simplicity.



ARCHI

Renowned Danish designer Henrik Pedersen combines two simple materials to produce a Lounge Chair that defines the concept of understated elegance. As Henrik says, "The challenge of this design was to create a complex solution from the simplest palette – almost to create everything from nothing. I wanted to create the purest form of seating with the most traditional of materials and yet attain both comfort and a design statement that surpassed more opulent routes".







ARCHI DINING / BAR

Scandinavian design meets shaker. This trans-Atlantic concept leaps creative boundaries, combining notes of mid-century architecture and a minimalist aesthetic. At home in any contemporary or classic space, Archi cleverly combines two elemental materials - outdoor rope and Gloster's signature buffed finish teak, to produce furniture that is as perfectly refined as it is striking.



SWAY

Henrik Pedersen says: "In outdoor situations we often spend more time relaxing and lounging, and when dining we tend to take our time. So why not make the situation as comfortable as possible?" With Sway, the Danish designer has combined a finely proportioned teak frame with a practical sling seat and back to deliver inherent sprung comfort despite an extremely minimal profile.







SWAY

LOUNGE / DINING / BAR

Initially limited to dining chairs only, Henrik has expanded his concept for 2019 to include the introduction of a bar chair, lounge chair, a two seater sofa and an ottoman - adding both bar height and deep seating function and appeal to the Sway range.



SWAY

In outdoor situations we often spend more time relaxing and lounging, and when dining we tend to take our time. So why not make the situation as comfortable as possible, with a cantilever construction and a sling seat that is flexible enough to provide a soft landing.



HELIO

From the Greek word meaning sun - bright warm and golden. The sun is at the centre of most of our outdoor activities, either escaping it in the shade, or enjoying it in the warm and soothing light it radiates. With the elements in constant rotation, easy and flexible comfort is therefore important. The new Helio collection of sunloungers suits this purpose perfectly. Light, versatile, but still with a fluid and well defined lines, any placement or position can be accommodated without giving it any unnecessary thought.





TUNDRA DINING

Here, modern classics are what it's all about. Different materials, which are harmoniously combined, incorporate proven advantages to surprisingly new effect. The interaction of teak and synthetic fibre creates a uniquely individual dynamic with a solid but pleasantly rounded teak frame and slender armrests that are as appealing to the eye as to the hand.





MIX & MATCH

The freedom of choice is yours...
Confident styling and a strong, simple colour palette combined with a sophisticated fabric collection, means that the Gloster 2019 lounge collection is more dynamic than ever.

GRID

Grid - a name that describes both function and mind-set. A grid of complementary units forms the basis of a totally flexible seating system where you can combine various individual elements to meet your specific needs.

When functionality is key and simplicity is the only design cue needed, Grid's elementary format is the perfect solution for deeply comfortable seating in a stylish world.







GRID

Danish designer Henrik Pedersen conceived Grid as a bridge between stark minimalist design and large scale luxury. By combining slim, aluminium frames powder coated in Meteor or White with the elegant geometric forms of deep and comfortable seat and back cushions, Henrik has surpassed his goal.

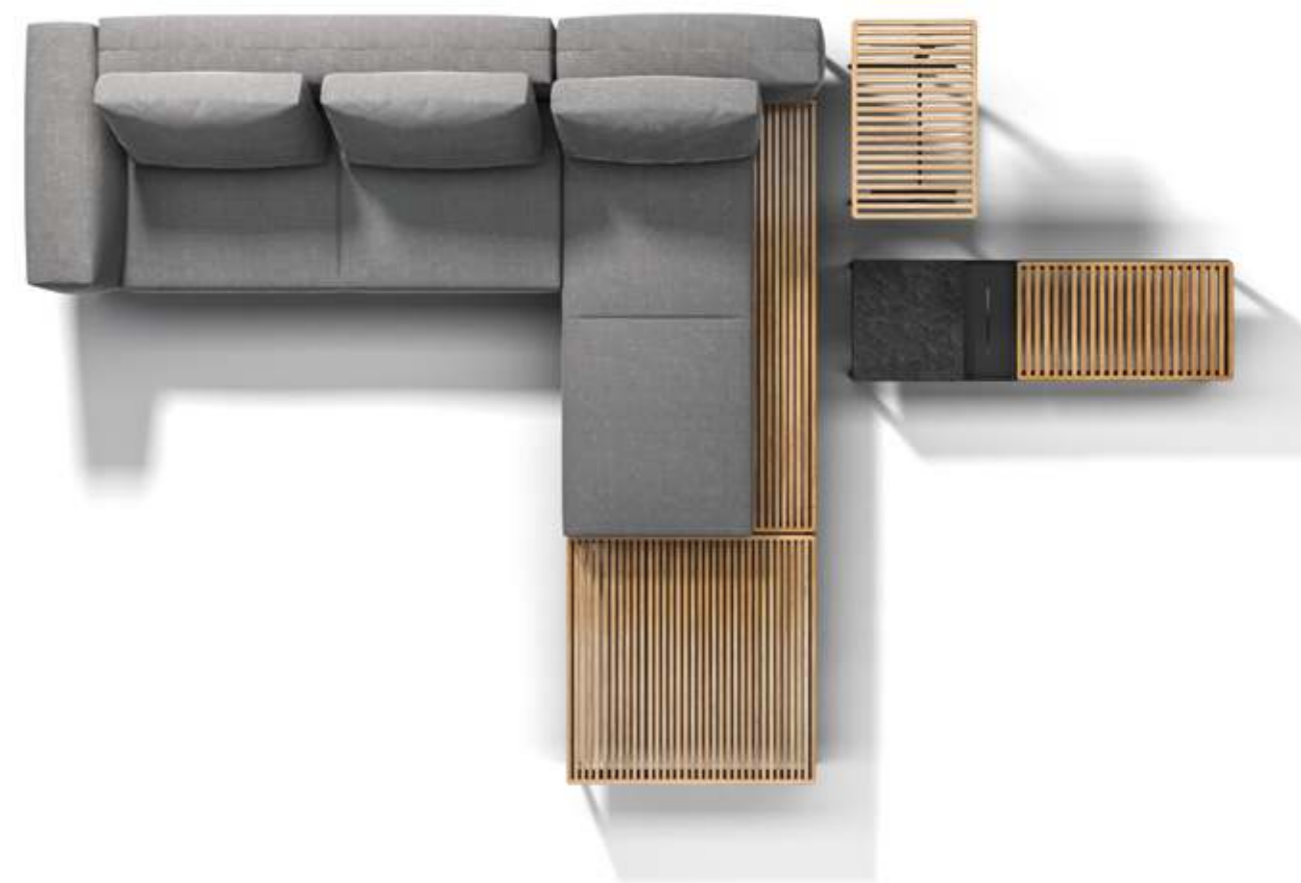






GRID

A 2015 Red Dot Award winner, Grid features fully upholstered outdoor cushions in a wide choice of outdoor fabrics. With matching side and coffee tables with slatted teak or durable ceramic tops, the Grid collection screams taste and style with quiet confidence.

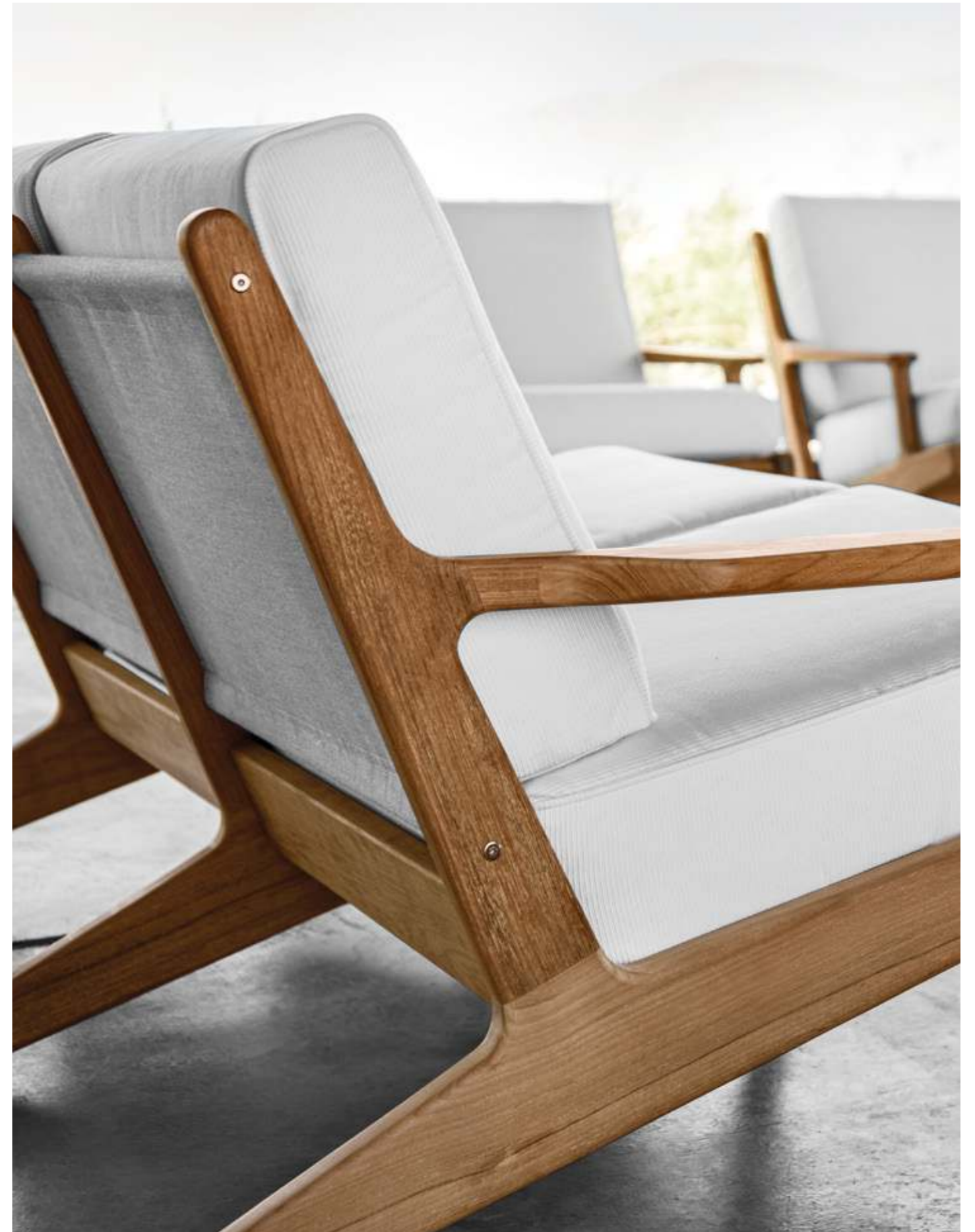






BAY

Can you recall that sense of escape? Of finally leaning back, forgetting your worries and staring out across the water towards the setting sun? Henrik Pedersen set out to capture the feel of sitting by the coast when designing the Bay collection. The reclined position emphasises an introspective and relaxed state of mind and is intended to create a sense of being at rest in a safe-haven.





BAY LOUNGE

Suitable for quiet family times and day to day life for the style conscious, the vintage lines of Bay's frame are crafted from Gloster's impeccably finished teak combined with upholstered outdoor fabric cushions. A matching slatted teak coffee table and side table complete this timeless collection.





BAY

Whether single statement piece or complete collection, slender minimal slings or deep seating indulgence, Bay represents a step into a simpler world. Take a moment to lie back and enjoy the view.



GRAND WEAVE

Conceived by noted Danish designer Henrik Pedersen, Grand Weave is nature converted into modern outdoor living. Following rural cues from hand crafted willow and hazel hurdles, modern materials are combined to create an up to date, resilient twist on rustic seating. Aluminium and man-made fibres are cleverly interwoven to create a beautifully tactile seating group at home in any surrounding.







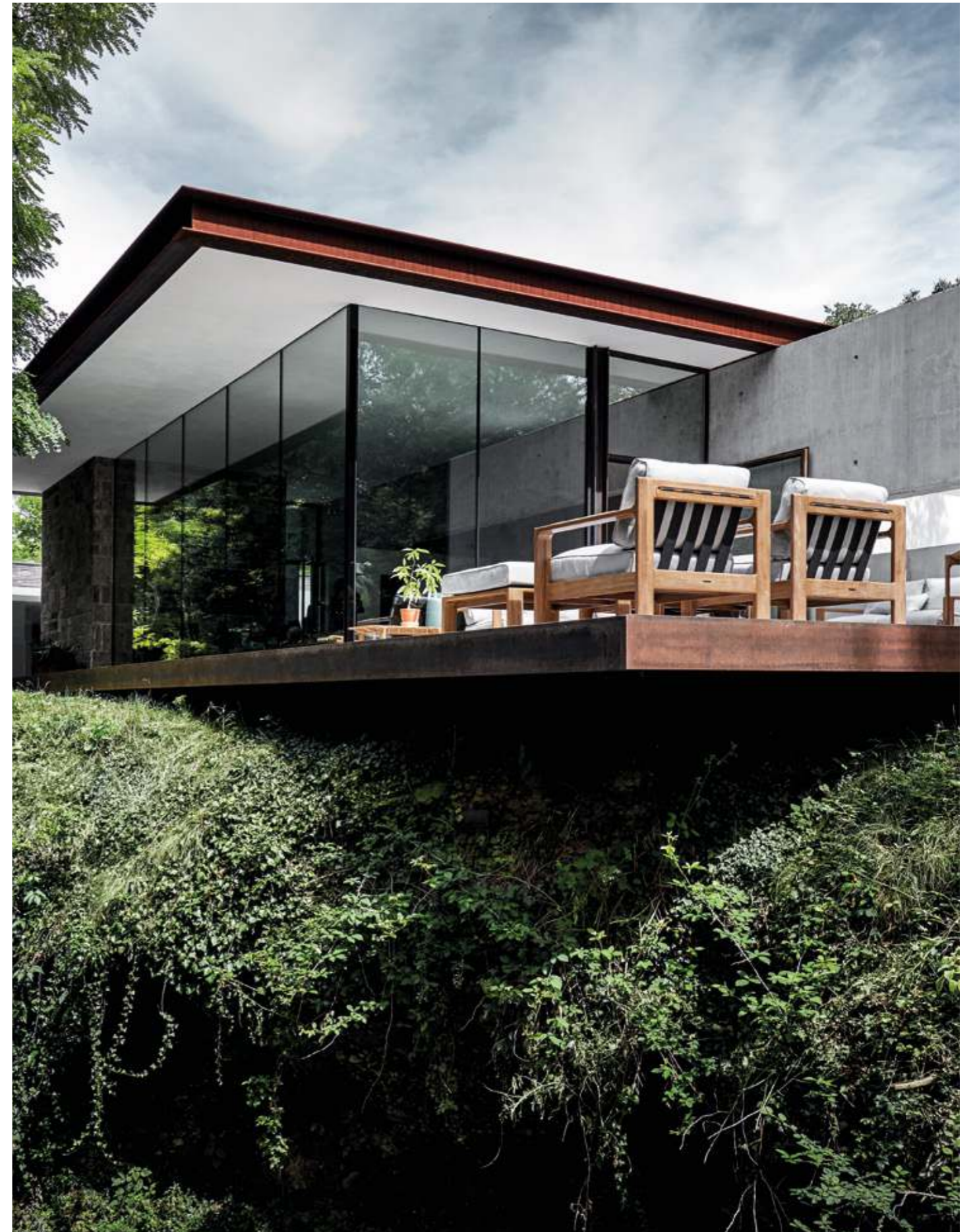
GRAND WEAVE



Grand Weave makes use of oversize, tactile man-made fibres, stylishly woven around the beautiful aluminium frames to make a deliberately bold statement. Grand Weave's designer, Henrik Pedersen says "We are simple creatures. In nature often scale means strength and integrity and I considered this in the selection of the palette of materials used in this design."

LOOP

Broad horizontal lines and assertive angles combine to form the bold, indulgent profile of Loop. But Loop isn't just about first impressions. Look closer and details can be found that further emphasize Gloster's reputation for quality and design. Subtle curves add a level of sophistication. Back straps are deliberately wide to unite materials used. And the junction between strap and teak is proudly displayed, creating a confident line that further unites all seating options.



LOOP

Loop was conceived by Henrik Pedersen with the purpose of creating a collection that would stand out in any space. As the name suggests, Loop's iconic lines were first drawn with the notion that they would cross design boundaries. Simple and ever popular Scandinavian nuances give way to cleverly integrated comfort.

106 | 107





LOOP

The Danish designer says "Loop is Loop for so for many reasons - to me and perhaps to others it represents a circle in design - looking back to styles that have come before but moving on, all at once. Then of course the materials are physically a loop for structure."





VISTA

Inspired by the sleek yachts of the French Riviera, the Vista outdoor lounge collection features strong horizontal lines formed into flowing, curved shapes, creating a visually light, yet welcoming form. Sleek, angled legs contrast with the curved backs and add to the design appeal.





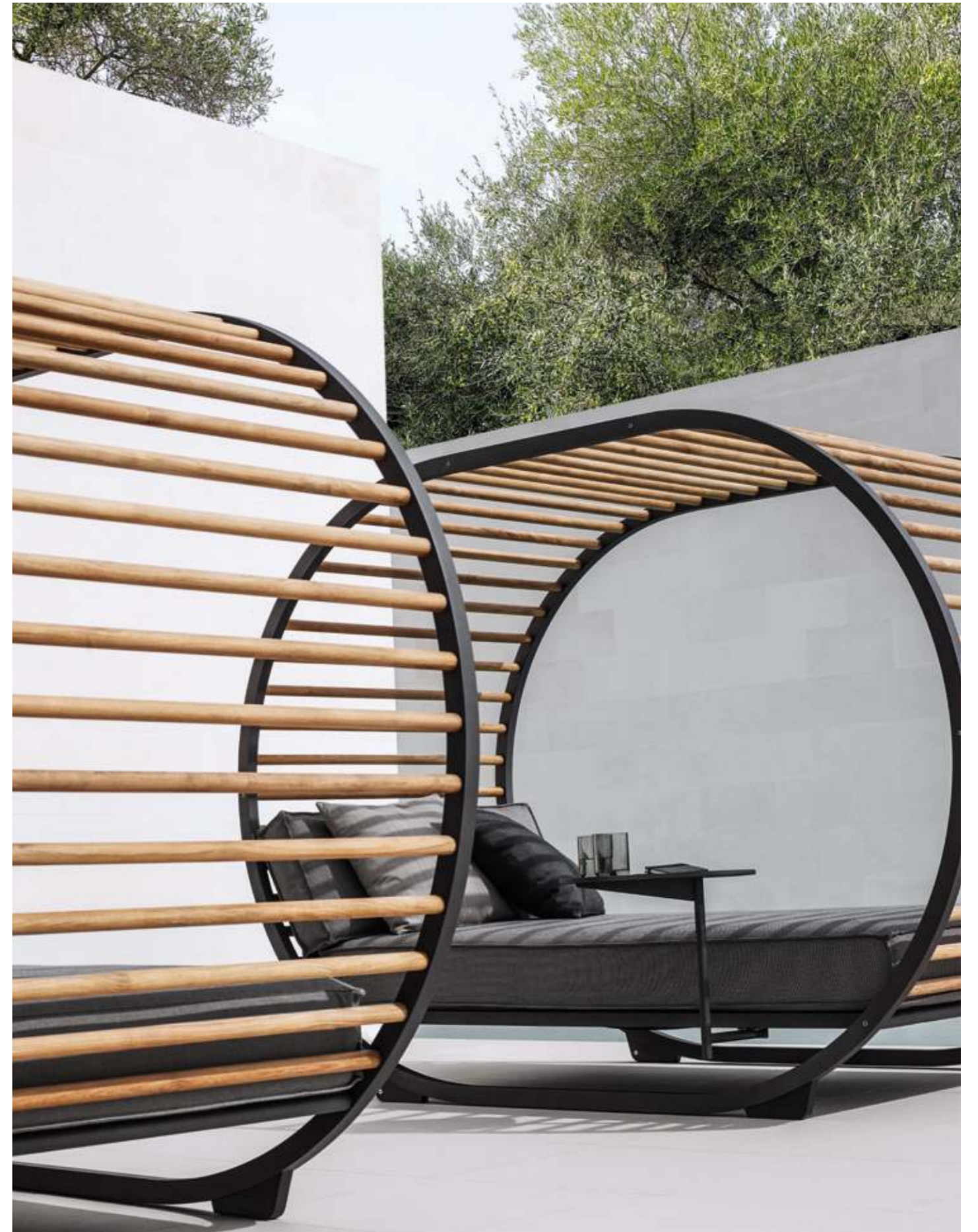
VISTA

With the popularity of both outdoor upholstery and low maintenance, aluminium frames in the ascendancy, Vista was designed to capitalise on these trends and bring a stylish, yet simple modular seating collection to the market at a competitive price.

CRADLE

It's all about creating defined rooms, your own private oasis in the outdoor area, but still open and exposed to the elements - with a sense of enclosure. Luxurious for one, but big enough for two.

Indulgently conceived by the talented eye of respected Danish designer Henrik Pedersen, Cradle is the epitome of luxury. More than large enough for two, Cradle surrounds and comforts. With a selection of shades, privacy can be adjusted to suit. A variety of finish and fabric options as well as an integrated side table mean you can create your very own haven.





BEPAL

Like shells connect almost seamlessly at the joint, so the two parts of the Bepal chair join at the back to make an extremely comfortable lounging chair.





BEPAL

DINING

SPLIT
CARVER
WHIRL
CLIPPER

SQUARE
RYDER
ASTA

The humble table. A place to meet, a place to eat, a place to share time, experiences and interact with one another. Tables can be large or small, social or intimate. Shapes range from round, through square to rectangular – some can even be extended for when you need to accommodate more people while others fold up for when storage is limited. All in all, the table has quite a job to do, so just as well we offer a wide variety of options to help find the one that is perfect for you.

And the perfect chair should never go unnoticed in the fray of a social occasion. Easy to move and comfortable from first sit to last drink of the night your seating should be the perfect accompaniment to any evening. Whether modern or traditional, conveniently stacking or designed to endure, each chair has its place.

MIX & MATCH

Tables offer the perfect starting point to mix and match. Experiment with different frame colours, sizes and table top materials to find the configuration that fits both your style and your space. Finally, choose the right chair to combine - maybe even several different styles for that truly individual look...



SPLIT

The legs of the Split table have a very characteristic look with an inverted 'Y' construction and tapering form, which emphasises a light and subtle connection to the ground. The uneven cutting of the teak table top slats adds an organic look, whilst tricking the eye with a visual surprise.



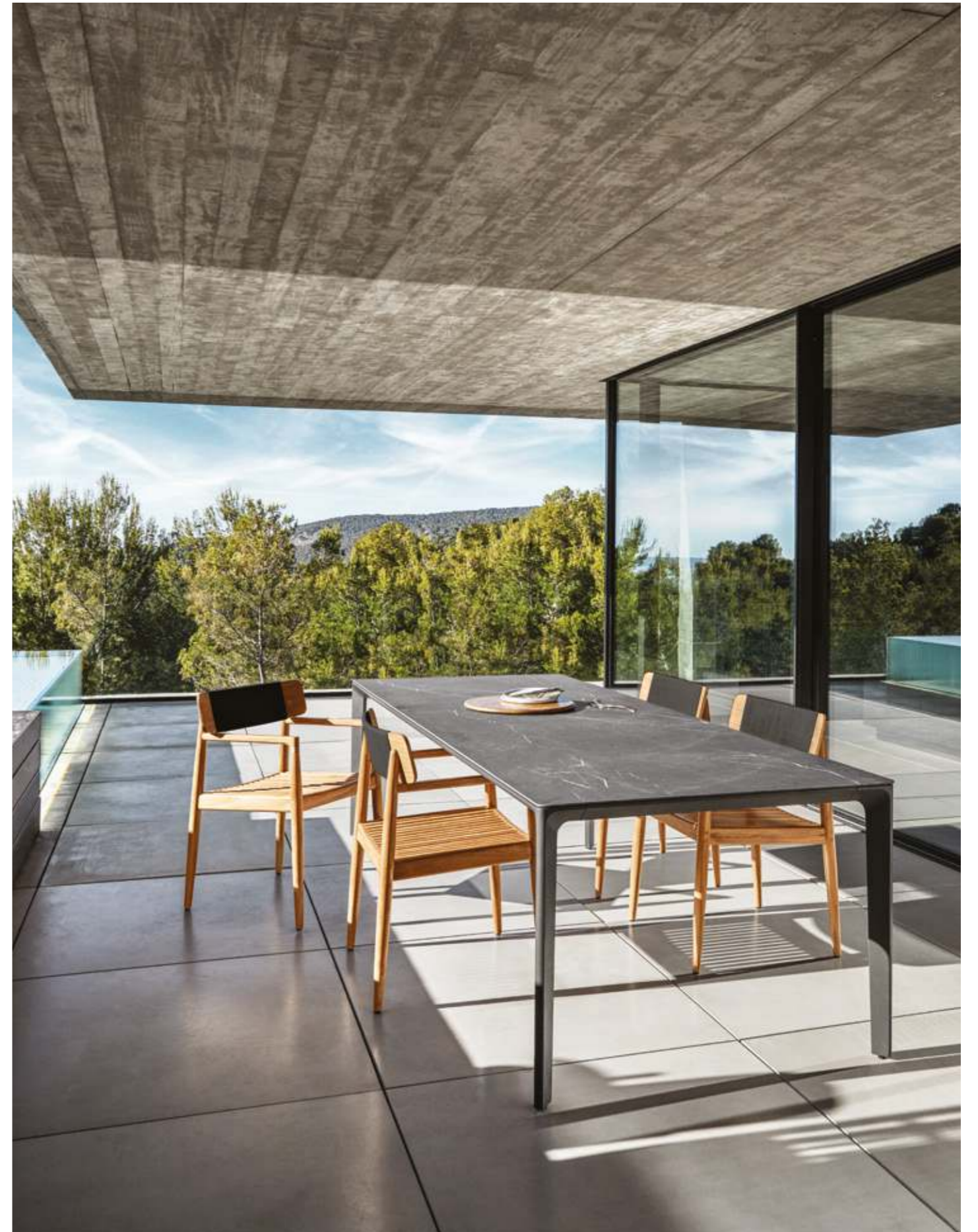
SPLIT

Thin and crisp twin panels of resilient, heatproof ceramic create a stunningly minimal, yet highly practical top surface. Available in a tough White or Meteor powder-coated finish the tables, while visually light and airy are exceptionally sturdy and are available in the three sizes - large, medium and small.



CARVER

In the same way that an artist carves in stone or wood to create a unique form, the same way of thinking has been applied to the Carver tables, where the cross-rail and legs have been subtly sculpted, like pieces hewn from a solid block.





CARVER

Designer Henrik's statement is to the point: "In the same way that an artist carves in stone or wood to create a unique form, the same way of thinking has been applied to the Carver tables, like pieces hewn from a solid block." It's easy to see this inspiration... where the cross-rail and legs have been subtly sculpted it doesn't take much to imagine the space between being solid before the legs and frame are skilfully cut with delicate angles.



CARVER

Carver tables are expertly fabricated using extruded aluminium which is then finished with a durable powder coating in White or Meteor colours. A cleverly designed corner casting ensures absolute stability despite the apparently delicate appearance. Rectangular tables are available in four sizes, with a stylish round version completing the range. All are available with stylish horizontally slatted, teak or Bianco, Nero or Pumice colour ceramic tops.



CLIPPER

This nod to nautical heritage is no accident. Inspired by teak decking on the fastest and finest vessels of yesteryear, Clipper echoes the design notes of these pivotal feats of craftsmanship - the Tea Clippers that opened trade routes around the world. Emulating the levels of design and attention to detail that made these ships possible has allowed Danish designer Henrik Pedersen to deliver a new and unique take on dining.



CLIPPER

Henrik Pedersen was adamant the furniture should clearly reference its inspiration and indeed it does. From finely tapering legs that hint at masts, to the beautiful hull-like radii of the table edge, to the generous deck-like slats themselves, this design is as much a story of perfection as it is a catalogue of historic reference.

140 | 141





WHIRL

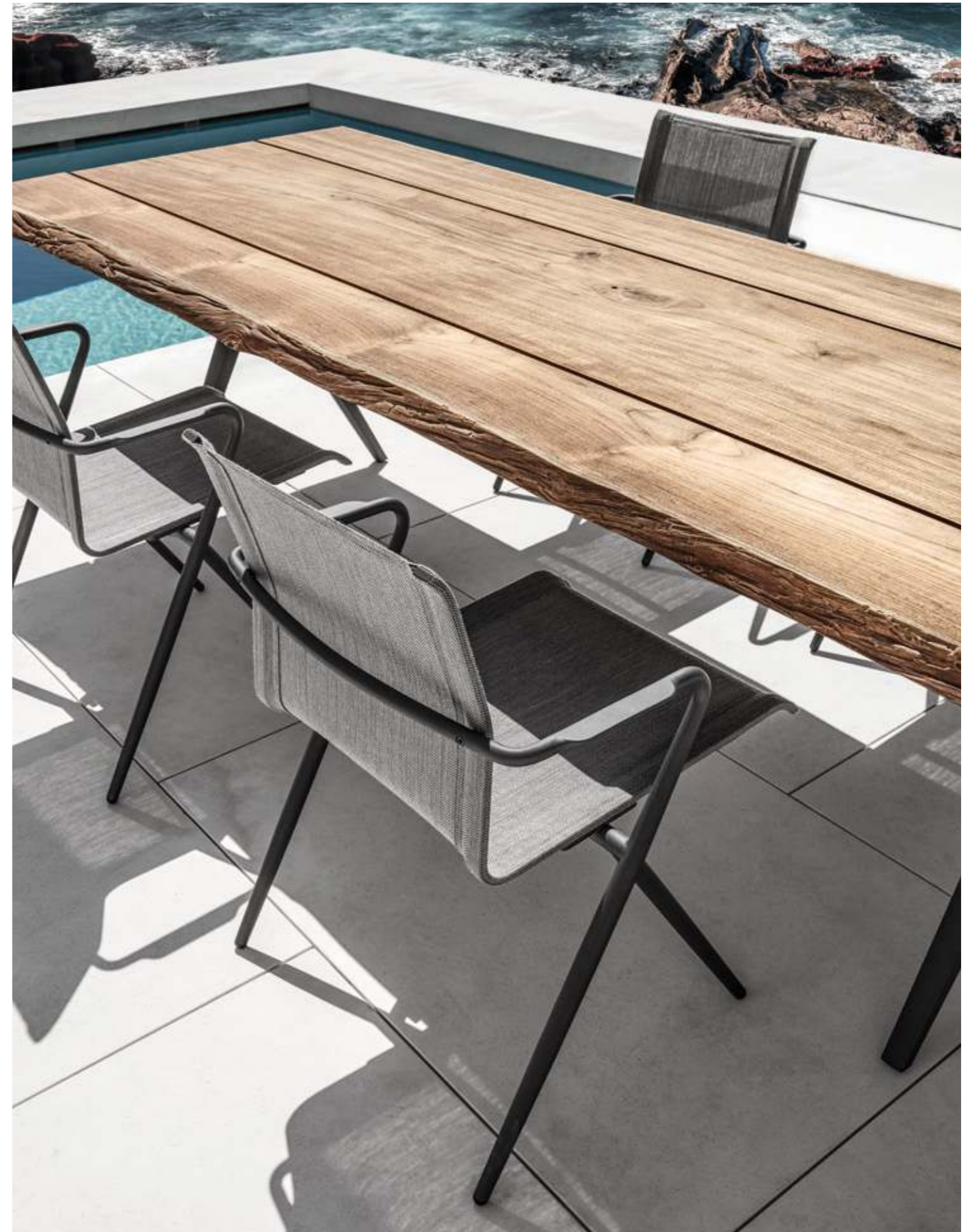
As the name suggests, Whirl by Danish Designer Henrik Pedersen is predominantly round. Each table in the collection is based on a full disc - without a beginning or an end, as Pedersen says; "The perfect template for creating a place where you can come together and communicate freely. Indeed, the ideal shape for a table."



RYDER CHAIR

The converging lines of this Stainless Steel stacking frame are inspired by more traditional folding designs. But in a unique twist, removing the mechanism creates an unprecedented minimalism. Finely balanced on scissor like legs this architectural piece is purely aesthetics driven.

With this extension to a considerable design portfolio, well known Danish Designer, Henrik Pedersen has pioneered a potential classic. Comfort remains priority while form is stripped daringly to a minimum. As Henrik says, "I believe Ryder is neatly reinforcing the classic design concept of less is more."



ASTA DINING

The idea behind the Asta design was the mix of materials and the shapes. The stainless steel frame has all the refinement of an indoor, anodised surface but with the practicality and soft touch of a powder coated surface. This, combined with the gently curved backrest, gives the chair a striking yet very welcoming look.



WHATEVER YOUR
REQUIREMENTS, GLOSTER
HAS A SIDE TABLE TO
SUIT. THE PERFECT SIZE,
THE PERFECT SHAPE
AND THE PERFECT STYLE
IS SURE TO BE FOUND
SOMEWHERE WITHIN
OUR WIDE OFFER OF
PRACTICAL OCCASIONAL
TABLES.



CECILIE MANZ.

CECILIE MANZ INTRODUCING ATMOSPHERE

ATMOSPHERE

Depending on your perspective, the word 'atmosphere' can conjure up a variety of emotions. The freedom to move, to enjoy independence or intimate moments - to be at one, whether alone or with those closest to you. But atmosphere also buzzes with chatter and laughter and dancing light - the sound of good times amongst family and friends.











ATMOSPHERE BY CECILIE MANZ

For the Gloster Atmosphere collection, Danish designer Cecilie Manz has drawn from observing couples, groups, friends and families interacting in seating areas - sliding down low in comfortable furniture, tucking up legs, resting side by side as stories are told and moments are shared.

"This is why it felt natural" Cecilie says, "to lower the whole setting, to enhance and welcome this feeling of comfort and quiet - when you wish to have slightly more relaxed moments, even a few centimetres in height makes a significant difference. Sitting lower pulls you into a familiar, soothing embrace - welcoming you to unwind and stay longer."

Cecilie says "The materials in a project should reflect the usage of the pieces. Aluminium and teak are great materials for outdoor spaces, the finish of the metal is robust, and the solid teak gets a beautiful grey patina over time. Combined with the fabric options, the palette is subtle and harmonious, revolving around muted, sophisticated tones.

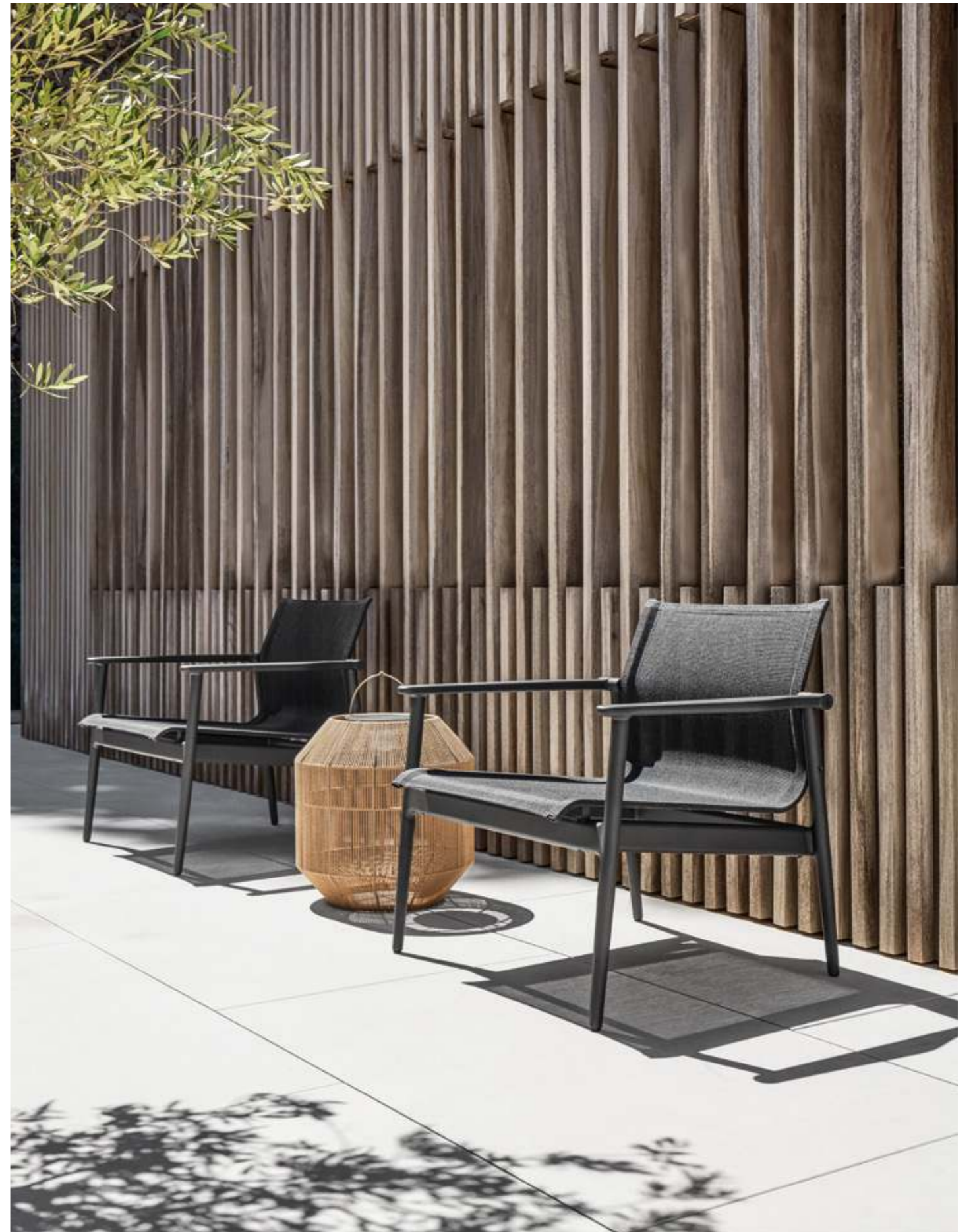
Cecilie has intuitively embraced the emotions behind the design in a powerful mixture of minimal, powder coated aluminium frames, generous boards of Gloster's signature teak and cleverly designed self-supporting upholstered panels.

When asked if she can summarise her collection Cecilie smiles before answering; "It's quite simple really... the name is a reflection of the situation. It's all about creating atmosphere.



180 LOUNGE CHAIR

Henrik Pedersen is no stranger to simple practicality. The respected Danish designer has cleverly emulated lines of traditional wooden furniture using powder coated aluminium and weatherproof sling to create both the stand out 180 Stacking Chair and the equally impressive 180 Stacking Lounge Chair . Followed with the equally attractive and no less practical matching Stacking Lounger, both are available in a variety of finishes. Henrik says "Travelling, exploring and being inspired by the moment are essential to being able to see beyond tomorrow."



180

Starting with a simple chair, the no-nonsense lines of 180 have the hallmark of a functional favourite. With clearly matching design cues, a comfy lounge chair and lounge compliment this popular aluminium and sling collection. The same delicate geometric lines and straight-forward stacking system is applied to all pieces.

166 | 167



DANSK

LOUNGE CHAIR

Traditional and modern materials combine in the Dansk collection to create imposing yet welcoming forms. Light, tactile and pleasant to the eye, Dansk strikes a familiar chord with its clean, tapering lines that hark back to a classic Danish furniture design for all seasons.



DANSK CHAIR

Designer Pool Eskildsen from Denmark wanted a truly indoor look that could live outdoors. Asked about the dining chair Pool is particularly proud of the fine lines and stability... "The way we have joined the legs to the seat and continued this connection to the arm and back rest with a gentle taper looks so delicate. But we have also been able to create 8 strongly linked points of contact and thus create a very stable piece. Beauty and function are combined - I am happy!"





MAZE

DINING & LOUNGE

Distinctive interwoven straps and ropes give the Maze collection its name which takes conventional woven furniture to a new dimension. Working with soft outdoor materials woven over angular, teak frames, the unique design offers both visual impact and exceptional comfort.







WILLIAM

The chair designed to fit like a glove. Light, powder coated frames carry the signature, curved teak slats that define the design language of William. And where your hands meet the frame, once again soft teak provides the touch.



VOYAGER

Inspired by the campaign furniture from the colonial era, the Voyager collection evokes a contemporary look with a vintage allure. Portable, practical and with a fresh, seaside colour palette, each item is engineered to quickly assemble for use, then fold or break down for storage or transport in accordance with the classic campaign style.

178 | 179





CURVE CHAIR

Like the desert sand define the dunes, so the soft curve in the backrest defines the Curve chair. Even though the materials are weatherproof and durable, the inspiration and the task was to make the chairs both comfortable and welcoming.

CURVE

Based on a powder coated aluminium frame available in either White or Meteor, back rests are an integrated aluminium panel with thoughtfully included handle that not only surrounds and supports, but also extends far enough around to offer a small armrest too.

182 | 183





HALO PARASOL

Although we all crave the sunlight, shade also has its own unique appeal. The new Halo collection of parasols feature sturdy, aluminium frames and heavy-duty Sunbrella fabric canopies. Available as both standard push-up and practical cantilever versions, with Halo, somewhere to cool off and get away from the midday sun is never far away.

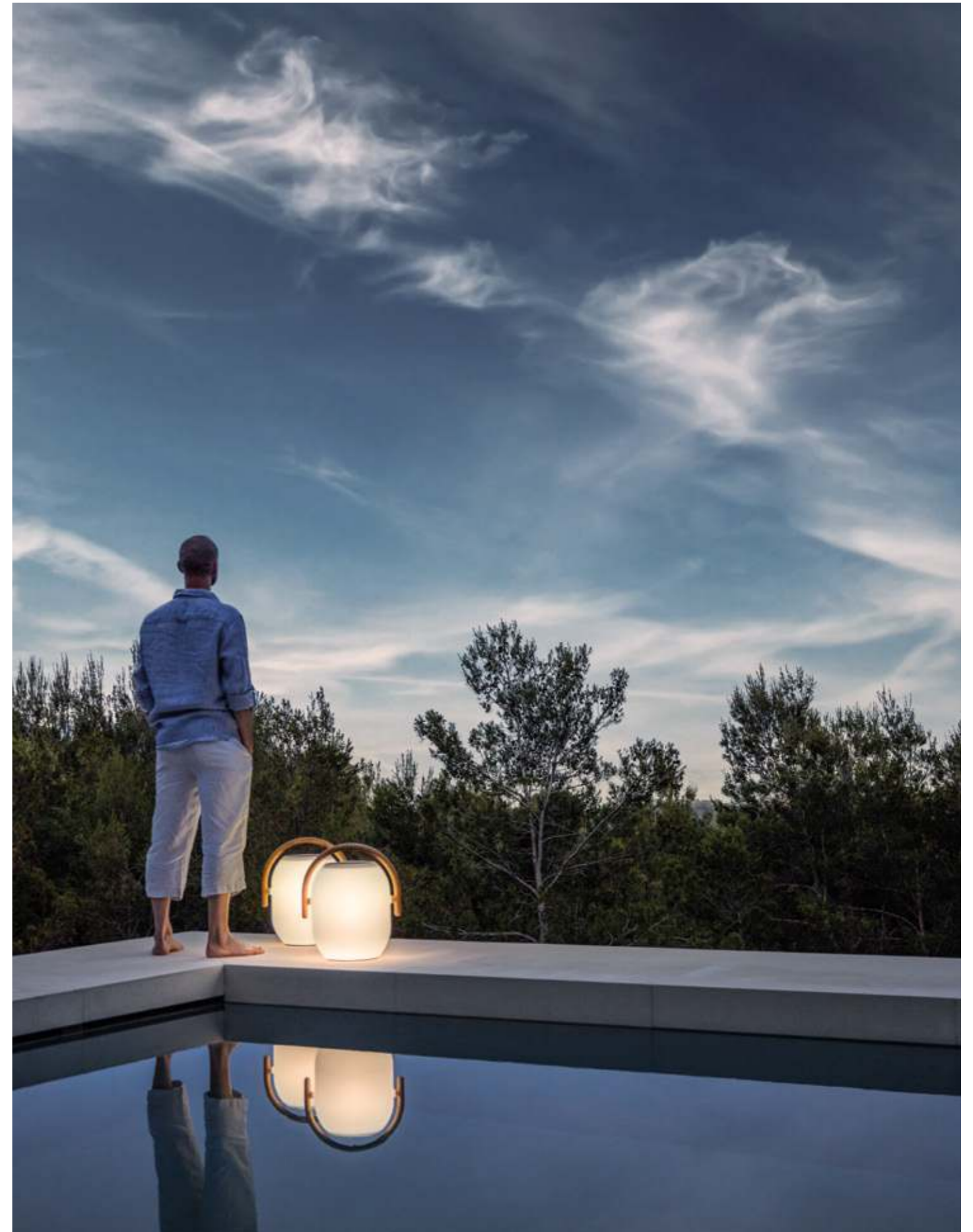


AMBIENT COCOON

Enjoy outdoor living even after the sun goes down. Portable, remote controlled illumination with style, but without strings. Charge during the day and use at night to create the perfect mood.

Mimicking the perfect texture and symmetry of silk cocoons, these minimal and delicate looking lanterns are deceptively tough. Manufactured from modern plastics and combined with a striking solid, buffed teak handle of almost agricultural purity, these (solar LED) lights are as much about design as they are about illumination.

Asked about the design influences, designer Henrik Pedersen says "My path in design has led me through many parts of the world, many cultures... Light and warmth are always principal parts of the best social environments and the most modest of devices are often the most effective. Here I combine the worlds of simplicity and light to achieve beautiful background illumination".





AMBIENT LANTERN & NEST

Inspired by the precise designs of the weaver bird, these nest like suspended lanterns gently rotate and sway in the evening breeze. As the night draws in, the soft light shining through the detailed weave throws dancing shadows as the setting sun shimmers through the leaves.





LIGHT & SHADOW
MAKE THE SHAPES
COME ALIVE

The inspiration is almost too obvious - two bells joined together to make up the shape of this iconic side table. The organic and fluid lines make an eye-catching addition to any outdoor area.



BIRD FEEDER AND NESTING BOX

"Everyone likes birds. What wild creature is more accessible to our eyes and ears, as close to us and everyone in the world, as universal as a bird?" - David Attenborough

The Birdfeeder and Birdhouse are the first examples of Gloster's introduction of smaller accessories designed to heighten the outdoor experience. Both combine aluminium and solid teak in way that is entirely practical but also entirely contemporary.

TRIDENT TABLE

The Trident collection takes its inspiration from classic, clean lines and modern, minimalist design. This Retro side table made with an aluminium frame and teak top is a delightful and practical accompaniment to any outdoor collection.



CLAMP

SIDE TABLE

The inspiration for Clamp is simple. A familiar rectangular profile that manages to be both sturdy, yet visually light at the same time. One tall table and one low – both in two neutral colours of powder coat with Gloster's signature, buffed teak table tops.





RUGS

Heavy duty outdoor rugs are available in either round or rectangular sizes and in several stylish colours of braid. Made from a durable, 100% acrylic outdoor rope, these rugs are hand woven and are the perfect complement to provide that finishing touch to both dining and seating sets.

BASKET

Adding refinement to a simple concept, Gloster's woven basket features a rustic finish and is ideal for keeping small items safe and at hand. Just like our rugs, baskets are beautifully hand crafted and finished with an impeccably detailed, hand stitched natural leather handle.





As with our own fingerprints, so every teak tree is one of a kind. Even within the managed plantation environment, no two trees share the same ground or reach for the light in the same way and thus, each grows and matures in its own unique way with the natural variations and irregularities that give timber its inherent appeal. Every growth ring, every knot and the graceful ebb and flow of the grain stands testament to its journey from young sapling to mature tree – a journey of up to 70 years.



FABRICS

Express your individual personality by choosing from our wide range of Sunbrella® performance outdoor fabrics. From solids, to patterns, waterproof to knitted textures, there's a fabric to suit every style and application – all featuring unmatched durability, fade resistance, and ease of cleaning.





GLOSTER FABRICS

No matter which type of fabric you choose for your cushions, Gloster only use the best outdoor fabrics that are manufactured using 100% solution dyed acrylic yarns for maximum resistance to the fading and degrading effects of sunlight. All fabrics are finished with a water-repellent

coating on the surface to reduce water absorbency. If the fabric does become wet from prolonged exposure, they will come to no harm, and the fabrics will dry out naturally. Gloster cushions are offered with fabrics that fall into three distinct groups:

OUTDOOR PERFORMANCE

Offered in a wide selection of stylish and sophisticated fabrics with a soft hand, our Outdoor Performance cushions use the softest, most luxurious fillings that give

the feel of the most comfortable indoor furniture. A highly water-resistant barrier beneath the outer fabric cover protects the fillings, keeping drying times to a minimum.



MAXIMUM WATER RESISTANCE

For maximum water resistance, a selection of Sunbrella® Rain cover fabrics features a water-resistant coating that is applied to the back face, helping prevent water travelling beyond the surface of the fabric. Although not offering quite the same soft hand as our other fabrics, these water resistant fabrics are very practical and quick drying. The fillings inside the cushion are engineered using open cell materials to allow for maximum air circulation, helping to speed up the drying process even further.

MAXIMUM SOFT TOUCH

Combining with all the benefits present in Outdoor Performance cushions, Gloster offer this range of exclusive, knitted outdoor fabrics, the first to be produced using 100% solution dyed acrylic yarns. These knitted fabrics offer the ultimate in terms of softness, giving a sumptuous cosy feel, while the inherent stretch allows for the perfect fit to even the most demanding of cushion shapes. The Wave fabrics feature a unique, 3D knitted structure giving levels of texture and softness unparalleled in outdoor fabrics.



GLOSTER FURNITURE GMBH

ZEPPELINSTRASSE 22
21337 LÜNEBURG
GERMANY

TEL. +49 (0)4131 28753-0

GLOSTER FURNITURE LIMITED

FIRST FLOOR, SUITE 43-44
AZTEC CENTRE, AZTEC WEST
ALMONDSBURY
BRISTOL, BS32 4TD
UNITED KINGDOM

TEL : +44 (0)1454 631 950

CONTACT@GLOSTER.COM
WWW.GLOSTER.COM
